

architects'
choice

taylor smyth architects

toronto

*"because of the epoxy,
river stone has a lot
of visual depth."*



michael taylor
www.taylor Smyth.com

▶ dark victory

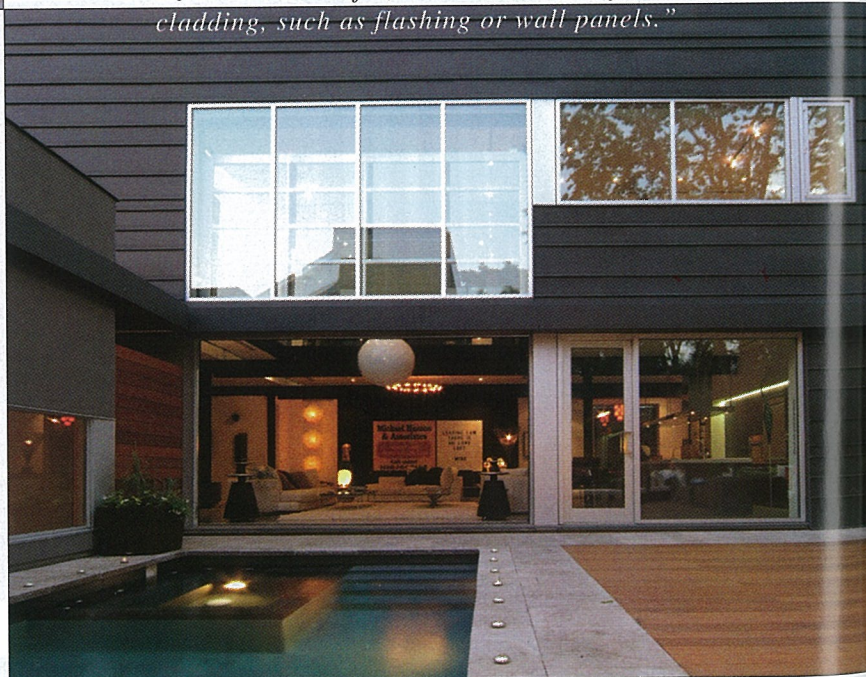
For cladding that's handsome and durable, Taylor Smyth Architects turns to VM ZINC. According to its manufacturer, the titanium/zinc alloy is highly corrosion-resistant and will last 40 to 100 years. "It requires no painting," says Taylor, "and, in its natural state, will gradually darken over the years." The metal is shown on this Taylor Smyth house. Umicore Building Products USA, 919.874.7173; www.v zinc-us.com.

▲ set in stone

Taylor turns to Ciot's resin-set river stones when he wants to shake things up a bit. Their surface "is just slightly rippled, so it feels nice on bare feet—especially when the floor is heated," he says. A variety of stones are available in slab or tile form. Ciot, 800.361.0869; www.ciot.com.



*"zinc is a beautiful, natural material for exterior
cladding, such as flashing or wall panels."*



◀ british turn

The Gira door handle by British designer Jasper Morrison is constructed of solid brass, resulting in "a solidity and weight that makes it feel timeless," Taylor says. Manufactured by the Italian company Colombo Design and distributed in North America by Orion Hardware, Gira is available in matte chrome, matte black, and polished brass. Orion Hardware Corp., 800.226.6627; www.orionhardware.com.



Photos: Portrait and river stones courtesy Taylor Smyth Architects; exterior by Ben Rahn/A-Frame; door handle courtesy Orion Hardware Corp.