

Restored Residence: Annex Coach House

By Canadian Interiors | On Apr 12, 2021

Share [Facebook] [Twitter] [LinkedIn] [Email]

Tucked discretely down a quiet urban laneway, the original Annex Coach House was part of Moore's Hearse Livery and used as a vehicle depot. Altered and added to overtime, it was converted into a residence in the 1980s. The only thing left from the livery is the brick walls in the courtyards.



Taylor Smyth Architects, working with William Fulghum Design Associates, gutted the two-storey structure down to the bare studs and enhanced the key features of the residence with a contemporary light-filled interior that incorporates a rich material palette of wood, stone, and leather. New furniture was selected for all spaces to complement the design. Distinctive wall and ceiling light fixtures throughout the house combine vintage 1960's pieces with modern ones.

The entry hall features built-in millwork, combining walnut, lacquered wood, and custom closet doors of leather-trimmed in bronze. From there, the view through the house culminates in the den where a linear gas fireplace is an inset into a dramatic wall of dark veined stone trimmed in bronze.



Photo credit: Doublespace Photography Inc.

The most remarkable features of the house are the pair of ivy-clad landscaped walled-in courtyards that flank the den, and the extensive rooftop terrace above.

A single ceiling plane unifies the living and dining room, appearing to float away from the walls with the incorporation of soft indirect lighting around its perimeter, and is pierced by two skylights that flood the space with light. The living room features a stone and walnut-clad fireplace.



Photo credit: Doublespace Photography Inc.

The stair to the second floor is surmounted by a skylight and continues up another partial level to a large private landscaped terrace over the living/dining and den, where raised planters and a series of decks define a sequence of seating and entertaining spaces. A custom wood screen, its random vertical slats creating a rich composition of light and shade, conceals the wall of the second floor.

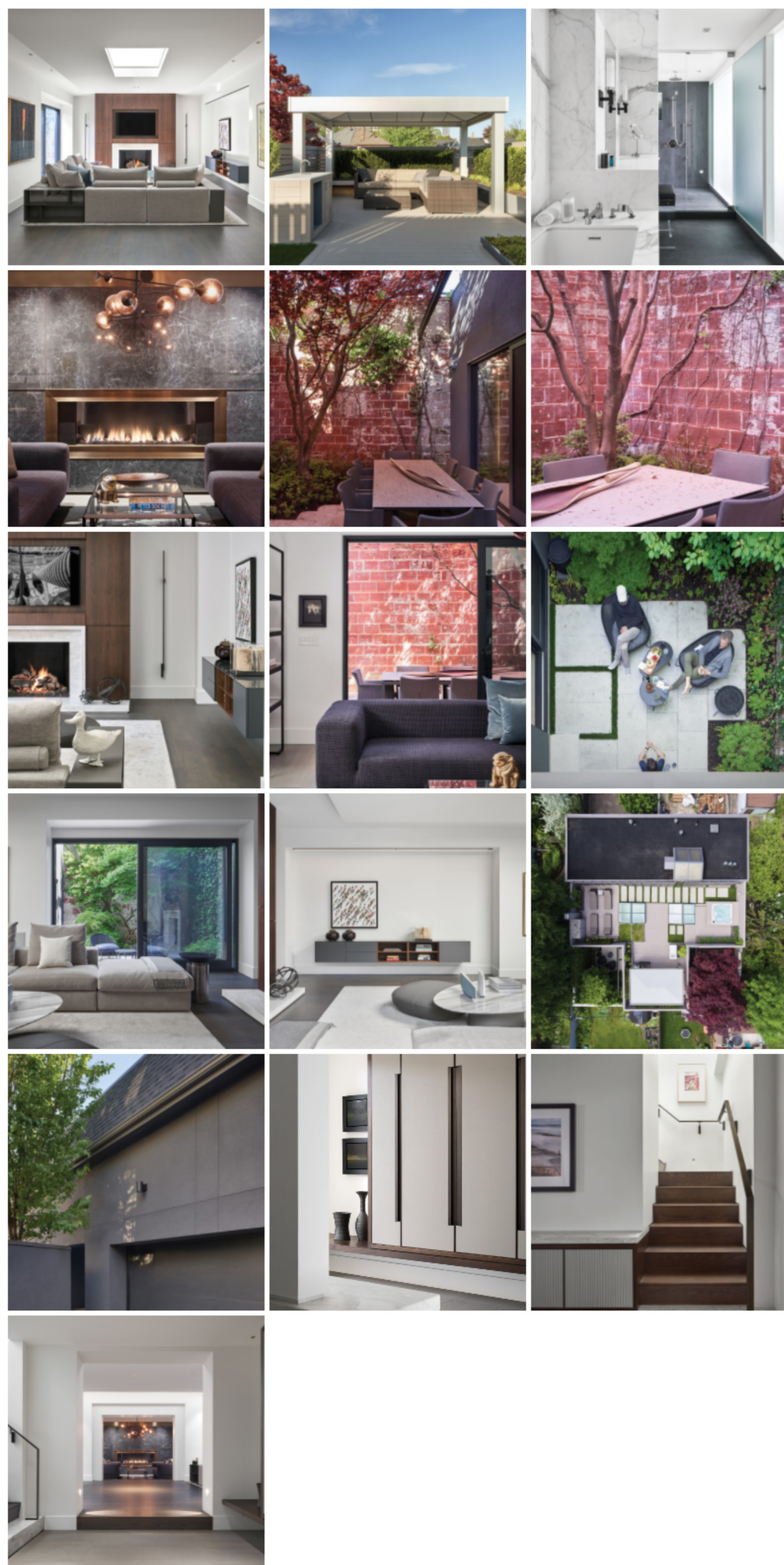
The second floor contains the master bedroom, ensuite bathroom and walk-in-closet, and a second bedroom and bathroom. The master bathroom is illuminated through a screen of alternating back-painted and acid-etched glass with diffuse natural light from the skylight at the stair. Inside, statuario marble laminam and charcoal colored porcelain tile create a dramatic contrast of light and dark.

Project Details

Team: Taylor Smyth Architect in collaboration with William Fulghum Design Associates

Landscape Architect: Holbrook + Associates Landscape Architects

Size: 3,200 sq. ft.



Garden + Terrace Kitchen + Bathroom Lighting Design Luxury Residential Architecture Residential Interior Design

Share [Facebook] [Twitter] [LinkedIn] [Email]

Scene >

- 47th Cliff Guangzhou 2021
Canadian Interiors • Apr 13, 2021
- DesignTO: Jamie Wolfond
Peter Sobchak • Mar 23, 2021
- DesignTO 2021 highlights
Canadian Interiors • Feb 20, 2021
- RioCan joins #LunchboxChallenge
Canadian Interiors • Jul 16, 2020